

Gojo & Company | **Sri Lanka Financial Diaries Tracking Survey (2022 Dec)**

2023-01-19

Summary

- Same as last month, though less diarists have difficulties accessing food, the rising prices of food is still a top concern
- Diarists' income keep on decreasing with more than half reporting that their income has decreased from November
- In general, diarists' financial stress levels are getting better compared to October

Comments from Diarists

“Food prices are high, medicine and education expenses as well.”

“It’s very hard to find money to live.”

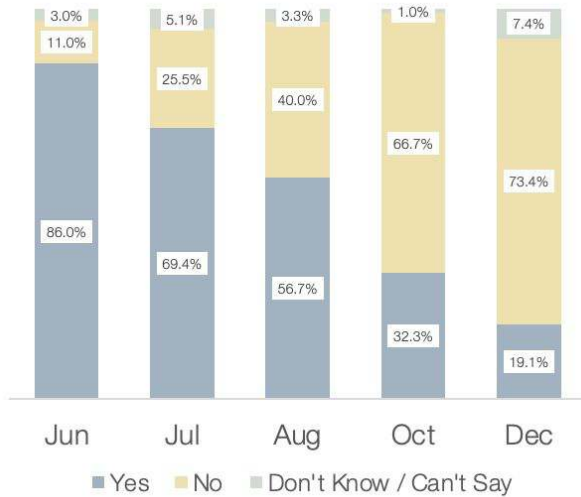
“We can’t purchase food because of the high prices.”

“I couldn’t work because of the rain.”

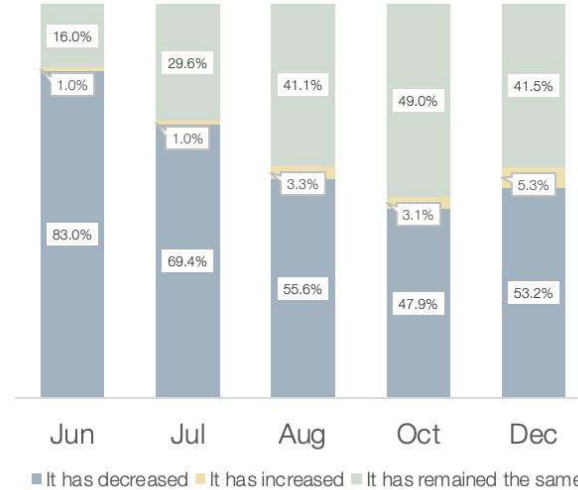
“There is less work in my workplace.”

Monthly Change (Jun-Dec)

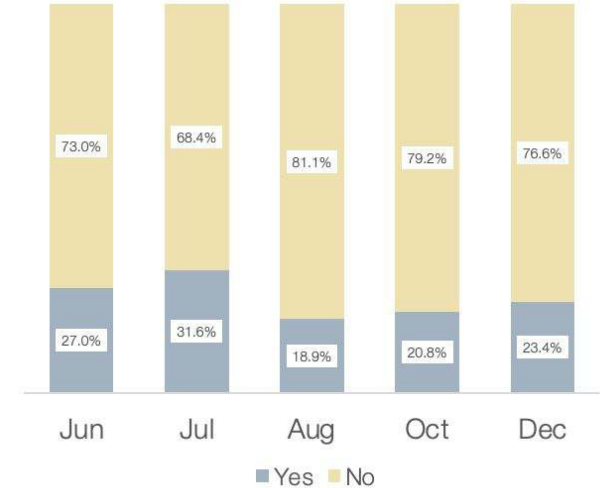
Have you had difficulties finding food in shops near you in the past week?



How did your income / your partner's income change in the past month?

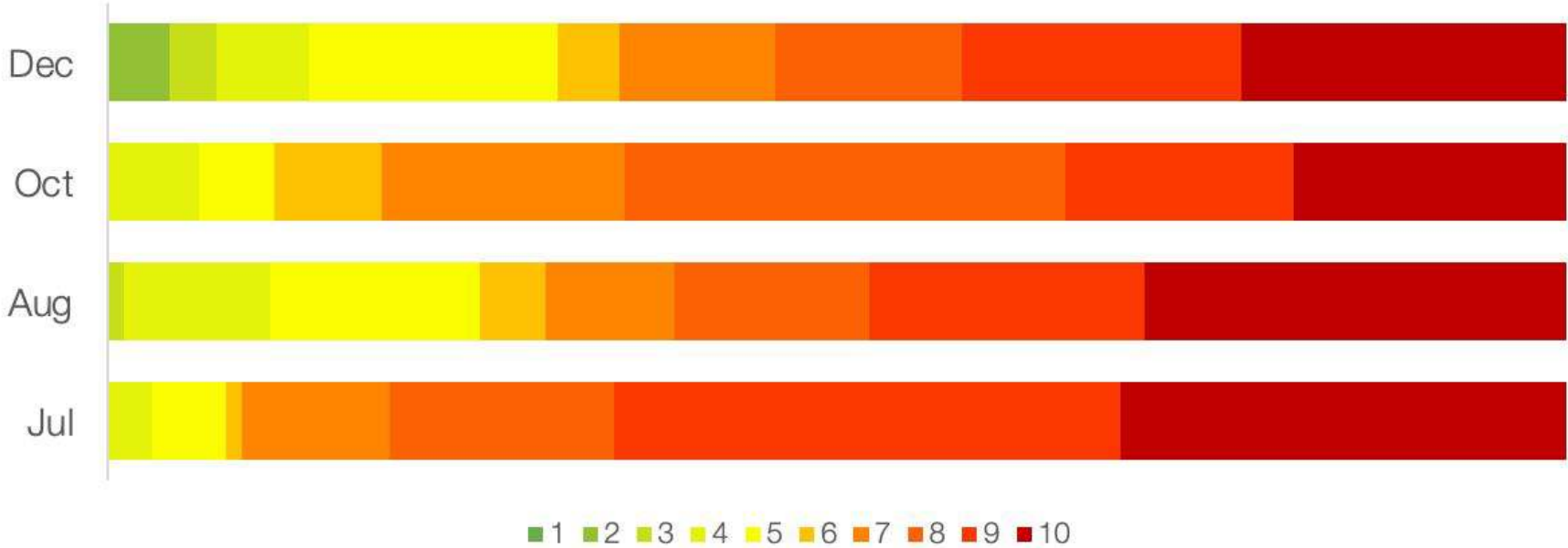


Can you tell us whether you experienced any instance where you had to source funds in the last 2 weeks?



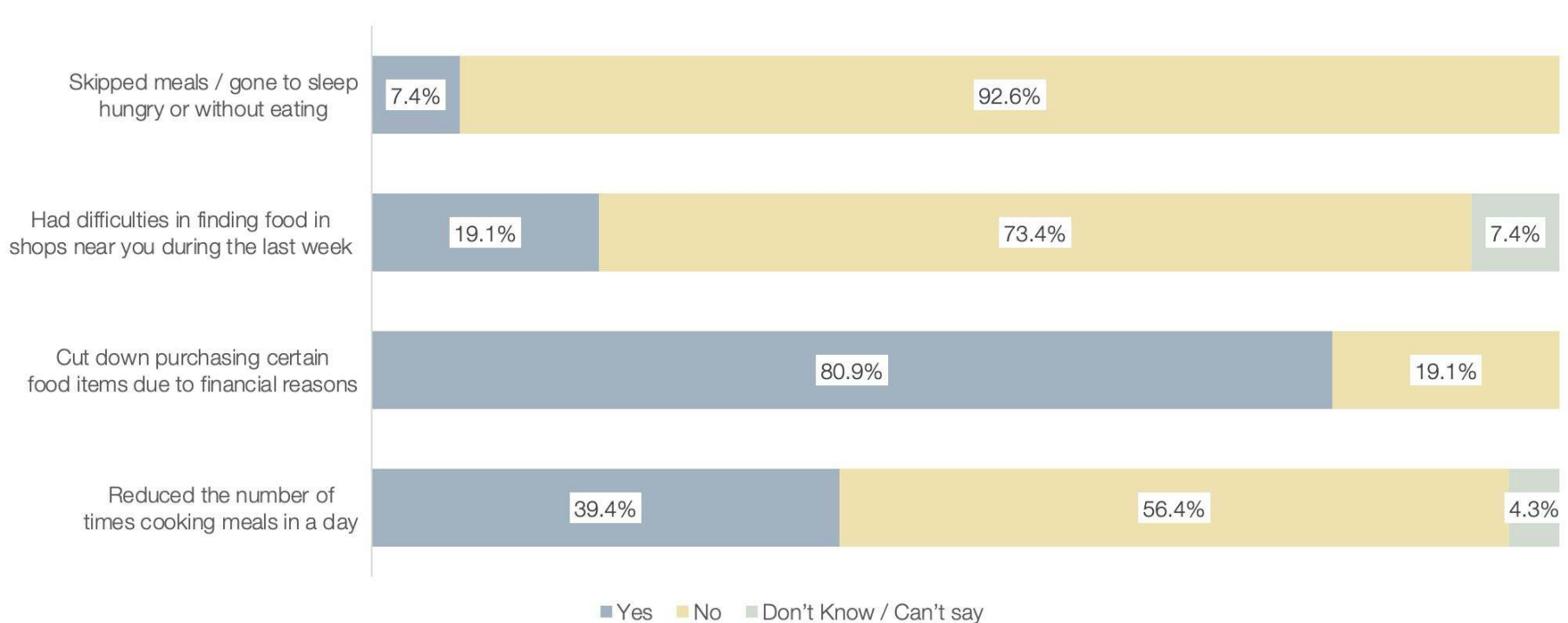
Level of Stress (Jul-Dec)

How stressed are you in the past two weeks financially?
1 = Not stressed at all, 10 = Very stressed



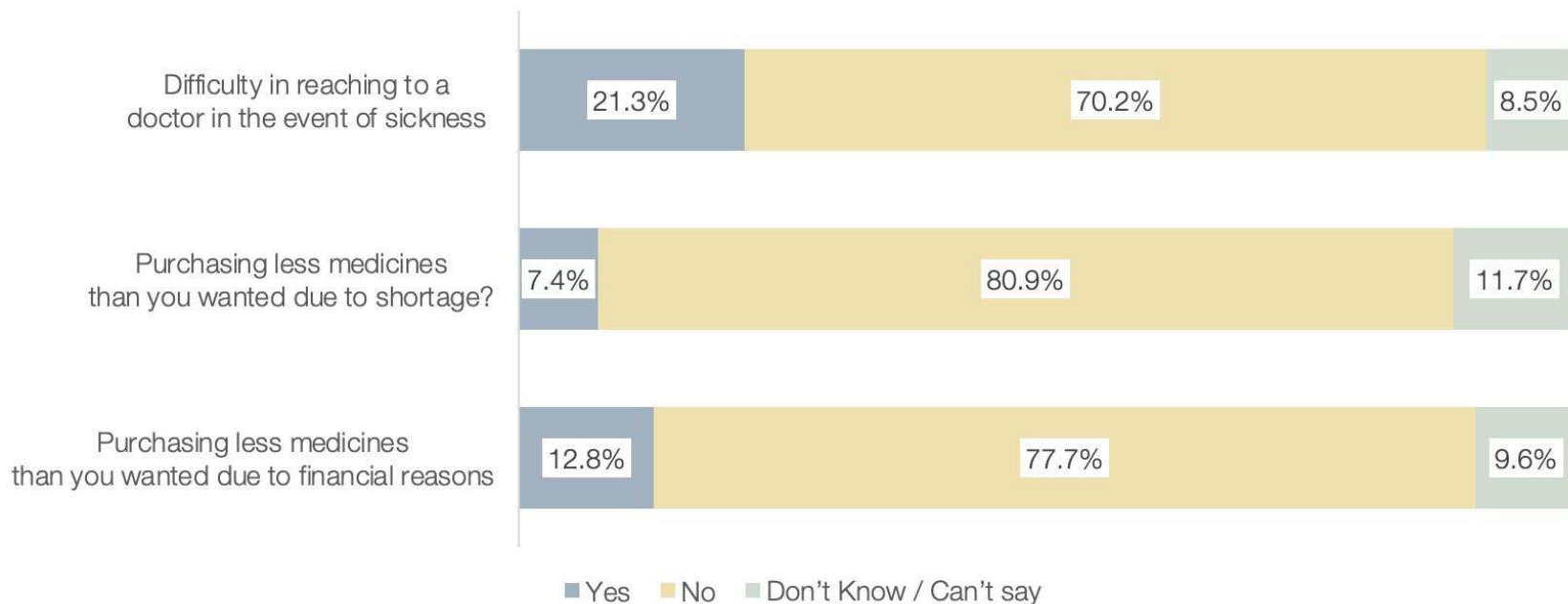
Food (Dec)

Did you face any of the below situations in the last 2 weeks?



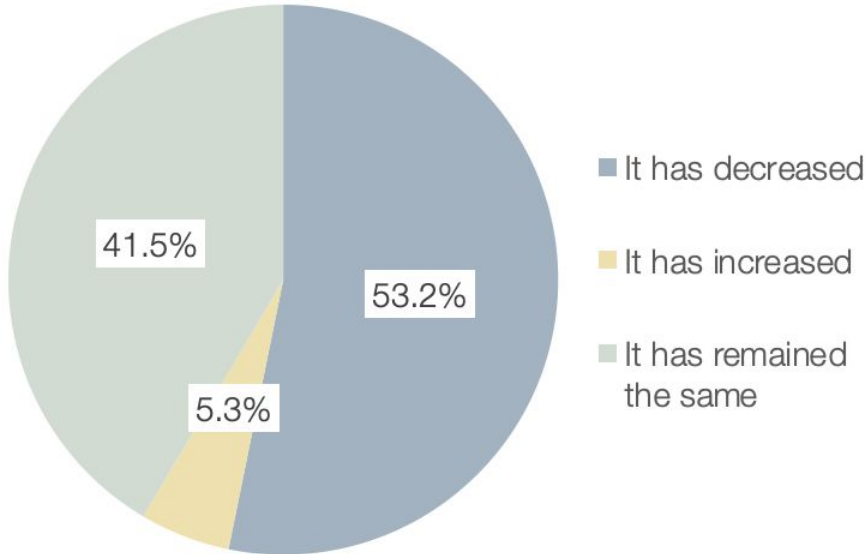
Health (Dec)

Did you face any of the below situations in the last 2 weeks?

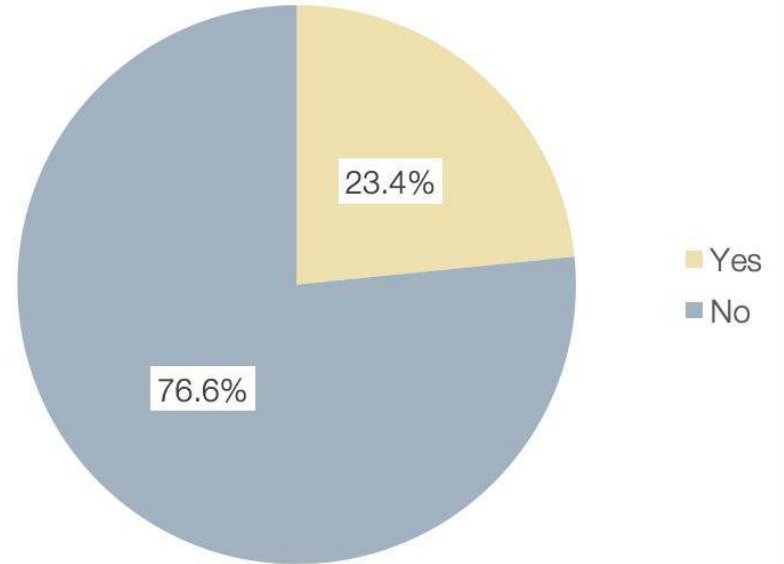


Household Financial Situation (Dec)

How did your income / your partner's income change in the past month?

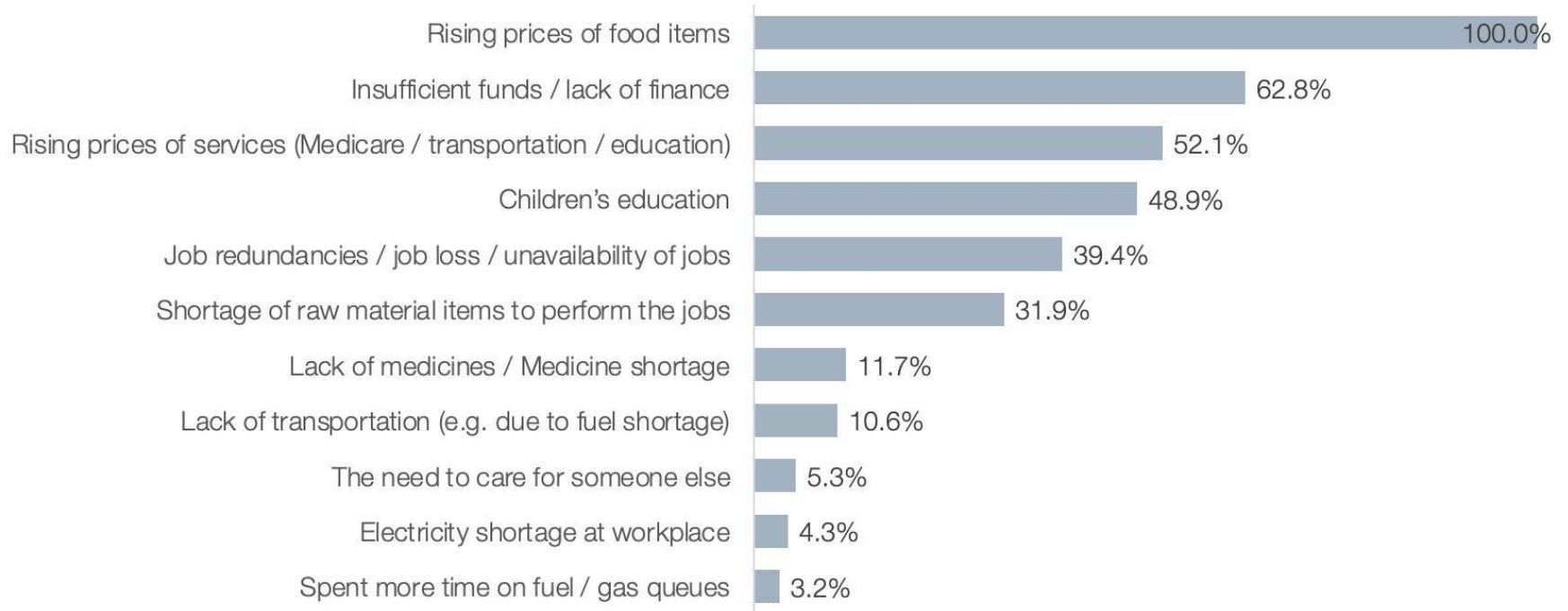


Can you tell us whether you experienced any instance where you had to source funds from a financial institution or from a friend / neighbor in last 2 weeks?

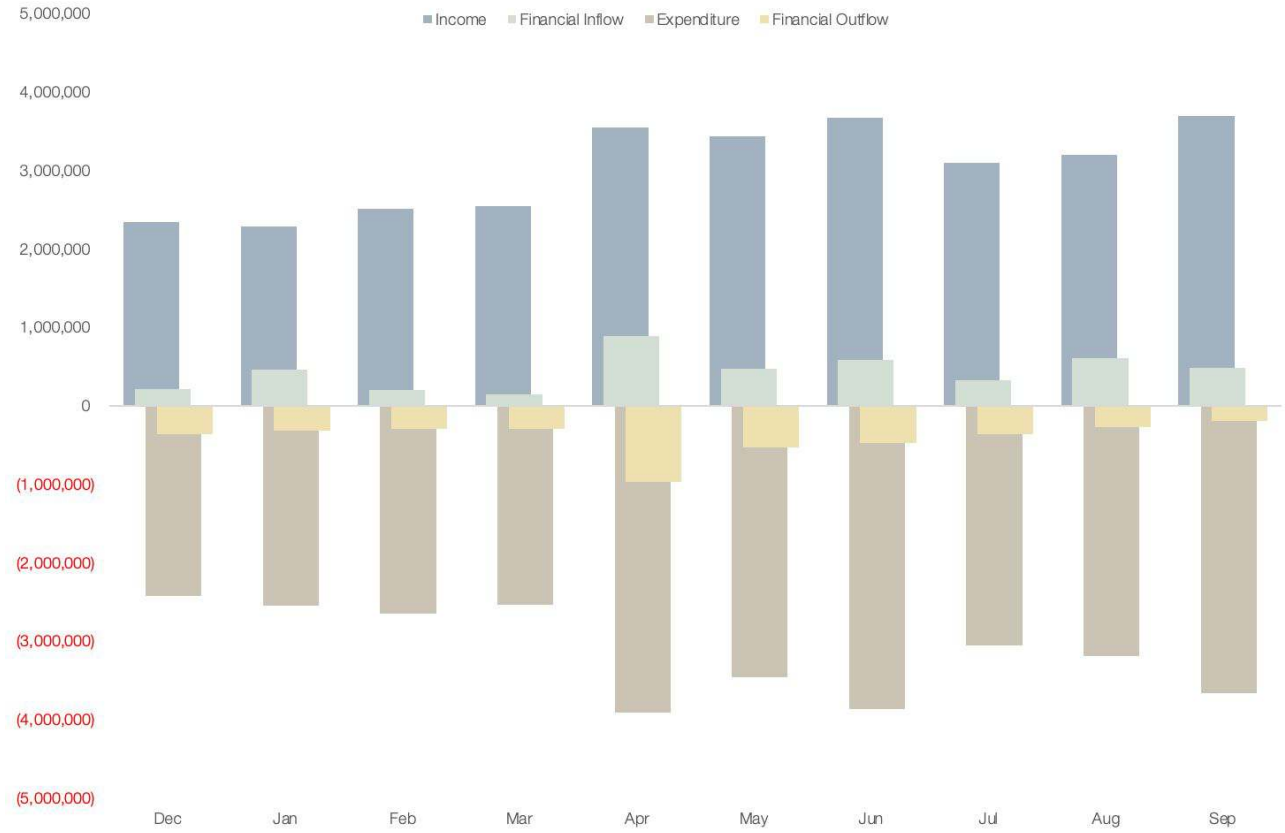


Worst Aspect of Crisis (Dec)

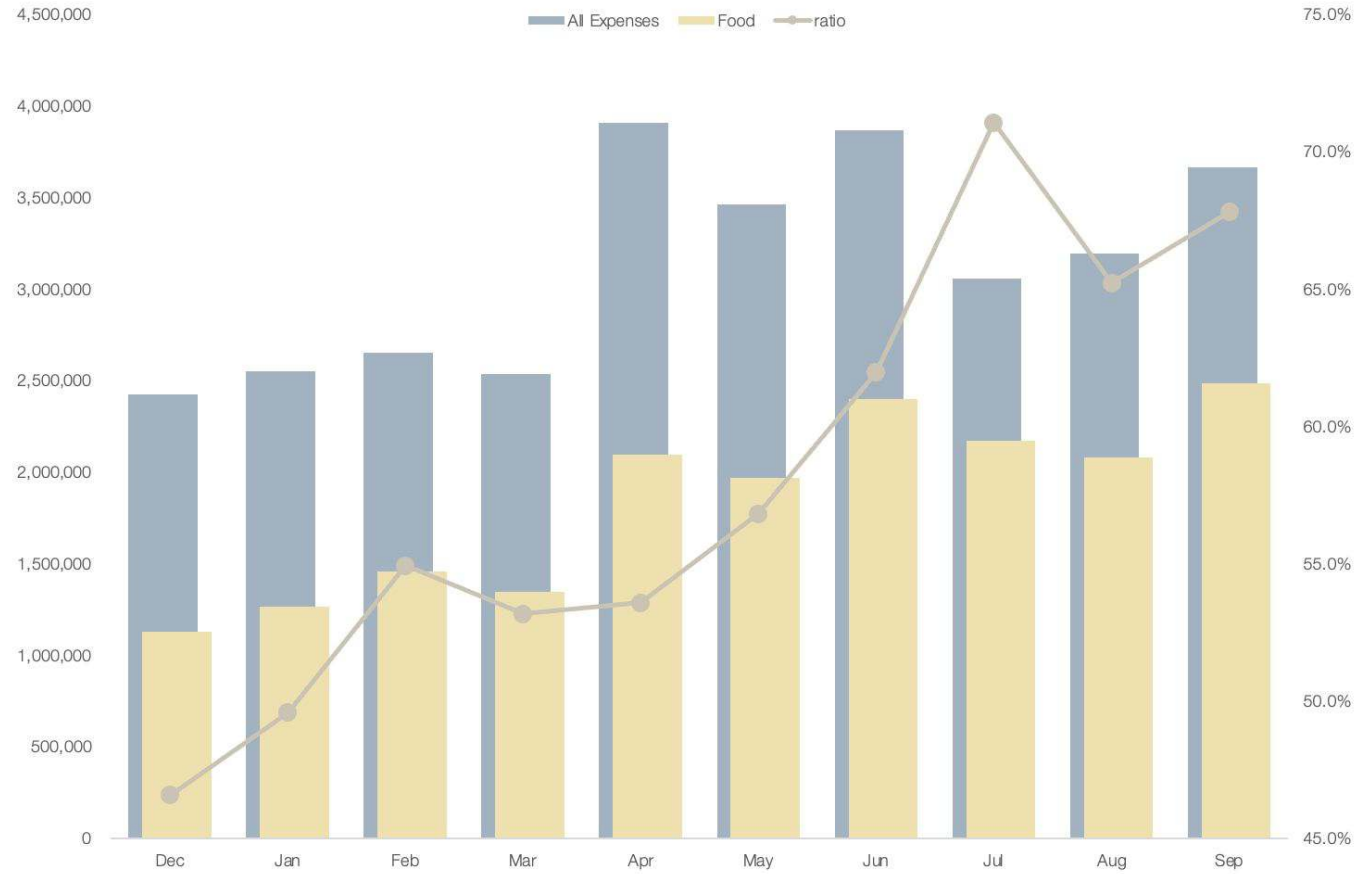
What at this right moment, is the worst aspect of the crisis for you and your family?



Inflow and outflow of households (Dec '21-Sep '22)



Food expenses ratio (Dec '21-Sep '22)



Notes

- Data from Gojo Sri Lanka Financial Diaries Project, taking daily inflows and outflows of 94 low-income households across Sri Lanka
- Tracking survey was conducted to all diarists during Dec 17-18, 2022
- We are grateful to Sparkwinn Research and our group company Sejaya Micro Credit Limited for their support in conducting this survey

Contact us at

yoshinari.noguchi@gojo.co / cheriel.neo@gojo.co / haruna.tanaka@gojo.co

Please reach out if you have feedback or questions on this report, or would like to collaborate with us on impact measurement or SPM.